

# Spare Parts List for Type 3271 (1400-250 cm<sup>2</sup>)



## Your contact details:

Title:

Name:

Company:

Customer no.

Street:

ZIP/postal code, city:

Country:

E-mail:

Phone:

## Ordering spare parts

The spare parts for Type 3271 are listed on the next pages. This document can also be used for ordering:

1. Fill in your contact data and information on the product.
2. Enter the quantity of spare parts needed.
3. Click [Send form] button to attach the PDF form to an e-mail.
4. Attach additional information (e.g. invoice, photos) to the e-mail, if necessary.
5. Send e-mail to spareparts@samsongroup.com.

Either

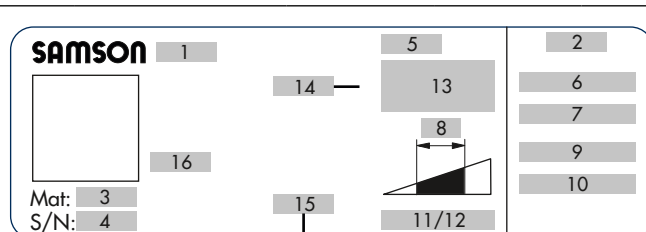
Configuration ID (Var-ID):

or

SAMSON order no.:

Position in order:

or



1	Type number	3271	13	Fail-safe action
2	Country of origin			Manual override
4	Serial number		14	Diaphragm material
5	Actuator area	1400-250 cm <sup>2</sup>	15	Connecting thread
6 and 7	Bench range in bar and psi		16	Date of manufacture
8	Operating travel in mm			Operating medium
9 and 10	Operating range in bar and psi			
11 and 12	Permissible supply pressure pmax in bar or psi			

Send form

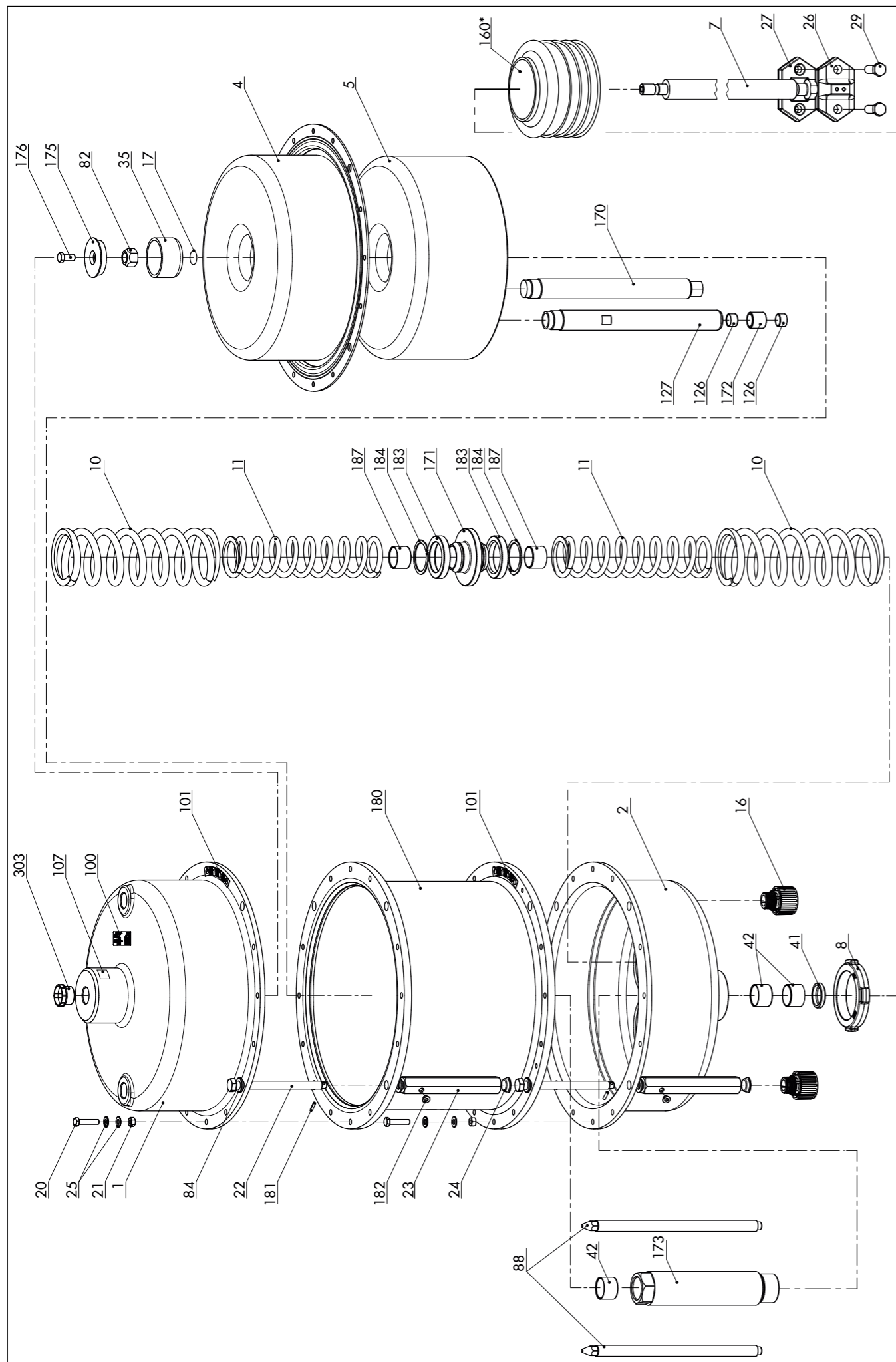
Print form

Clear form

Edition August 2020

Spare Parts List

EL 8310-8 EN



Spare part no.		Qty.	Filled in by SAMSON: material no.
1	Top diaphragm case		
2	Bottom diaphragm case		
<b>4</b>	<b>Diaphragm</b>		
5	Diaphragm plate		
7	Actuator stem		
8	Ring nut		
10	Spring (external)		
11	Spring (internal)		
<b>16</b>	<b>Vent plug</b>		
<b>17</b>	<b>O-ring</b>		
18	Screw fitting		
20	Hex bolt		
21	Hex nut		
22	Hex bolt (preloading)		
23	Hex nut (preloading)		
24	Screw plug		
25	Washer		
26	Stem connector clamp		
27	Stem connector clamp		
29	Hex screw		
<b>35</b>	<b>Compressor</b>		
<b>41</b>	<b>Wiper ring</b>		
<b>42</b>	<b>Dry bearing</b>		
82	Hex nut <sup>1)</sup>		
84	Washer		
88	Guide stem (anti-rotation fixture)		
100	Nameplate		
101	Label (preloading)		
107	Label (actuator transport)		
121	Ring bolt		
126	Plain bearing		
127	Guide tube (anti-rotation fixture)		
<b>160*</b>	<b>Dust shield (option)</b>		
170	Guide stem		
171	Spring plate		

Spare part no.		Qty.	Filled in by SAMSON: material no.
172	Bushing (to hold plain bearings)		
173	Support bearing		
174	Support stem <sup>2)</sup>		
175	Shim		
176	Hex screw		
180	Distance ring		
181	Spiral pin		
182	Screw plug		
183	Spacer		
184	Snap ring		
303	Blanking plug		

<sup>1)</sup> "Stem retracts" direction of action only  
<sup>2)</sup> "Stem extends" direction of action only

Specifications subject to change without notice

---