

## Type 7127 Feedwater System

For supplying water as well as the collection and feedback of condensate

### Application

The Type 7127 Feedwater System is used to supply water, collect and feed back condensate to Type 7120 and Type 7129 Electric Steam Generators.

### Function

The SAMSON **Type 7127** Feedwater System is used to supply water, collect and feed back condensate to **Type 7120** and **Type 7129** Electric Steam Generators. It consists of a condensate vessel and one pump (optionally plus one redundant pump).

The condensate that has been fed back (for example, using the **Type 7140** Condensate Recovery System or **Type 7141** Condensate Vessel with **Type 7111** Pump Assembly) is stored in the feedwater system and pumped by the built-in pump to the **Type 7120** or **Type 7129** Electric Steam Generator.

### Special features

- Designed to be used with a Type 7120 or Type 7129 Electric Steam Generator
- Turnkey solution
- Used for supplying water as well as the collection and feedback of condensate
- Little space required for installation
- Delivery pressure approx. 12 bar
- Open tank

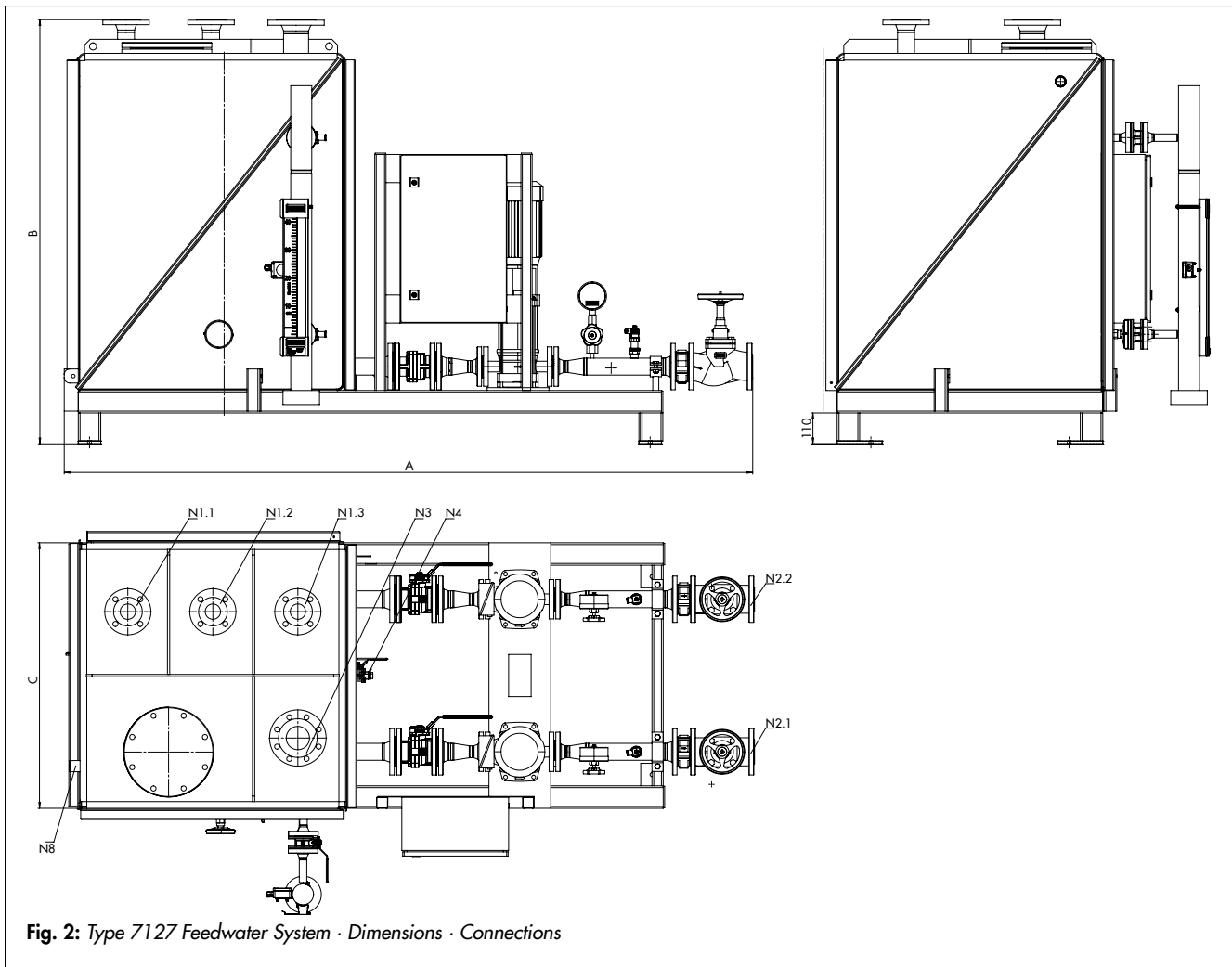
### Versions

**Type 7127 Feedwater System for supplying water as well as the collection and feedback of condensate**

- Flanges PN 16
- Available tank sizes:  
350 l for Type 7127-10/-11  
1000 l for Type 7127-20/-21
- Material: stainless steel or non-alloy steel
- With a feed pump or redundant pump (2 x 100 %)
- Delivery pressure approx. 12 bar
- With on-site level control without level indication (optionally with level indication)
- With 50-mm-thick mineral wool in aluminum casing



Fig. 1: Type 7127 Feedwater System with redundant pump



**Table 1: Dimensions and connections (flanges)**

Tank size in liter	Dimensions in mm			Flange connections			
	A	B	C	N1x	N2x	N3	N8
350	1500	1100	700	DN 100	DN 25	DN 50	G ½
1000	2100	1500	1200	DN 150	DN 80	DN 100	

